

# HEAD START

## PARENT

## HANDBOOK



**Family Name** \_\_\_\_\_



**Draw your family portrait**



# Table Of Contents

## Welcome and Program Information

|  |   |
|--|---|
| Mission and Vision                       | 3 |
| Welcome                                  | 4 |
| Program Information                      | 4 |
| Program Enrollment                       | 4 |
| Enrollment of Children with Disabilities | 5 |
| Confidentiality                          | 5 |
| Important Information- Reminders         | 5 |

## Parent Information and Engagement

|  |    |
|--|----|
| Attendance                                     | 6  |
| Attendance Agreement                           | 7  |
| Goal Setting                                   | 8  |
| Getting to Know You                            | 8  |
| Support and Community Referrals                | 9  |
| Reporting Suspected Child Abuse & Neglect      | 9  |
| Wellness Support Services                      | 9  |
| Program Management                             | 10 |
| Policy Council                                 | 10 |
| Parent Connection Committee and Parent Leaders | 10 |
| Community Complaint Procedure                  | 11 |
| Opportunities for Parent Engagement            | 12 |
| Parent Training                                | 12 |
| Triple P- Positive Parenting Program           | 12 |
| EHS Playgrounds                                | 12 |

## Education Information

|                                    |    |
|------------------------------------|----|
| School Readiness                   | 13 |
| Home Visits and Parent Conferences | 14 |
| EHS Home-Based Home Visits         | 14 |
| Discipline and Guidance            | 14 |
| Curriculum                         | 15 |
| Screenings and Assessments         | 15 |
| Ready Rosie                        | 15 |
| Toilet Training                    | 15 |

## Nutrition and Health Information

|                                 |    |
|---------------------------------|----|
| Nutrition and Meal Service      | 16 |
| Health and Safety               | 16 |
| Dental Screenings               | 16 |
| Health Services                 | 17 |
| Additional Tips and Information | 17 |

## Safety and Transportation Information

|                         |    |
|-------------------------|----|
| Pedestrian Safety       | 18 |
| Safe Riding Practices   | 18 |
| Child Safety            | 18 |
| Railroad Crossings      | 18 |
| School Bus Safety       | 19 |
| Transportation Services | 19 |

## Family Partnership Agreement

## Community Resources





## Welcome to the Head Start Family!

Welcome to the Head Start Family! We are happy to have you and your child in the City of San Antonio Department of Human Services Head Start Program. We hope your time with us is a rewarding experience for you and your family. This Head Start Parent Handbook is designed to provide you with information about our Head Start Programs and the important role you play in your child's experience. You are your child's first and most important teacher. Working together as a team, we will provide the support your child needs to succeed in school and in life.

Please read this handbook and become familiar with our policies and procedures. Keep this handbook in a safe place so that you can refer to it as needed. Please let us know if you have any questions. Sincerely,

**Audrey K. Jackson**  
Head Start Administrator  
City of San Antonio  
Department of Human Services  
210-206-5500

### Program Information

The City of San Antonio Department of Human Services Head Start Program provides high quality comprehensive services to over 3,000 families with children ages 6 weeks to 5 years.

Our Head Start Prekindergarten Program provides center-based services to 2,970 children. Our Early Head Start (EHS) Program provides three options for 360 children:

- EHS Center Based Program
- EHS Home Based Program
- EHS Child Care Partnership (EHS-CCP)

Our schools and centers are located within Edgewood ISD and San Antonio ISD.

For more information regarding locations and program services, please visit [www.saheadstart.org](http://www.saheadstart.org) or call the City of San Antonio Head Start Program at **(210) 206-5500**.

### Program Enrollment

The City of San Antonio Head Start Program prohibits discrimination based on age, gender, race, ethnicity, culture, religion, disability, sexual orientation, or family composition. Head Start services are available to families within the Edgewood and San Antonio Independent School Districts. The program encourages all families in these communities to apply. Each family must meet the federal requirements for eligibility and children must be 3 or 4 years old by September 1st for the Head Start program and 6 weeks – 35 months for the Early Head Start program. This criteria ensures children and families with the greatest need are prioritized and benefit from our services. Families may qualify for the Head Start program if their household income is at or below the poverty level. Also, families who receive public assistance (TANF, SNAP, or SSI), children in foster care, children who are experiencing homelessness, and/or a disability, may also qualify regardless of income.



**HUMAN  
SERVICES**

## Enrollment of Children with Disabilities

Young children vary in their skills, knowledge, backgrounds, and abilities. Effective teaching includes individualized teaching and opportunities for all children to access, participate, and thrive in the Head Start program. Our program recruits, enrolls, and serves children with disabilities. In collaboration with Edgewood ISD, San Antonio ISD, and our childcare partners, Head Start provides quality services to all children in an inclusive environment.

### My Child's Needs



I submitted diagnosis, evaluation, or referral information to my Family Support Worker or school



**Contact for Intervention Services**  
(Special Education or ECI)

Name: \_\_\_\_\_

Phone: \_\_\_\_\_

Email: \_\_\_\_\_



Questions I have about my child's learning needs

---

---

---

### Confidentiality

The City of San Antonio Head Start Program is committed to ensuring the security of personal, child, and family information. Confidentiality requirements include, but are not limited to:

- Physical and electronic records/files are secured.
- Only authorized staff may access child and family files.
- Staff members only share your child's information on a need-to-know basis.
- Written consent is required from parents/guardians prior to any release of individual child or family records.
- Staff are trained on how to keep information confidential.
- Only information that is essential to provide services will be recorded and maintained.
- Our program follows HIPAA, Head Start, and school district privacy guidelines.

## Important Information- Early Head Start

### Reminders:

CCS Application(EHS-CCP);

Attendance: Center Hours: \_\_\_\_\_

First Day of School: \_\_\_\_\_

Other: \_\_\_\_\_

Next Appointment for Assessment and Goal Getting:

Date: \_\_\_\_\_ Time: \_\_\_\_\_

## Important Information- Head Start

### Reminders:

Small bag or backpack, small blanket, two change of clothes - (No uniform required for SAISD) Please let us know if you need help acquiring any of the listed items.

\* If your child is not fully potty trained you may need more than two sets of clothes.

Attendance: School Hours: \_\_\_\_\_

Tardy Bell Rings: \_\_\_\_\_

First Day of School: \_\_\_\_\_

Meet the Teacher: \_\_\_\_\_

Other: \_\_\_\_\_

Next Appointment for Assessment and Goal Getting.

Date: \_\_\_\_\_ Time: \_\_\_\_\_





# Parent Information

## Attendance

The City of San Antonio Head Start Program partners with Edgewood ISD and San Antonio ISD to provide full-day educational services for pre-kindergarten aged children. Because of this partnership, your child is also enrolled in the school district's pre-kindergarten program. Once enrolled in the school district, by law, your child must attend daily. This law is called compulsory attendance. When your child has multiple and/or prolonged absences, Head Start and the school district will work with you to identify and help remove barriers. Attendance is also important in the EHS program. Children enrolled in EHS are expected to attend daily.

Head Start/Early Head Start is a school readiness program, so it is important to establish a regular routine of attendance. Parents/guardians must bring their children to school/center on time every day.

If your child is absent, or going to be absent for any reason, please notify your Family Support Worker, child's teacher, or the school/center front office within one hour of the program's start time. When reporting your child's absence, please let staff know the reason for the absence and a possible date your child will return to class. If your child is not able to return by that date, please contact our staff. You will be contacted if your child's absence has not been reported within one hour of the program's start time.

If your child is absent for two (2) consecutive days without notification, has a pattern of irregular attendance, or stops attending school/center, contact will be made by telephone, cell phone, email, text, or an in person home visit will be completed by a Head Start staff member to discuss the absences and offer assistance and/or resources to ensure that any attendance challenges are addressed. If your child does not return to school/center or maintain regular attendance, then the program may place your child back on the waitlist and consider your child's spot vacant.

### ***Did You Know?***

Familiar activities can provide comfort for both adults and children. Just like adults, children feel more confident and secure when their daily activities are predictable and familiar. A consistent daily schedule and established routines give children a predictable day. Help ensure that your child gets to school on time by establishing a daily routine and ensuring your child gets 10-12 hours of sleep each night.

Do you need ideas on how to establish routines? Your Family Support Worker or child's teacher can help!



### **Who do I call if my child will be absent:**

Family Support Worker: \_\_\_\_\_

Phone: \_\_\_\_\_

School:/Center: \_\_\_\_\_

Phone: \_\_\_\_\_

Teacher: \_\_\_\_\_

Phone: \_\_\_\_\_



# Attendance Agreement

Head Start is a school readiness program that helps children and families gain knowledge and skills. Building the habit of good attendance is key to your child's success. Missing 10% or about 2 days each month can affect your child's overall development, attending everyday helps establish

## I Understand That.....

- 1 My child must maintain regular attendance: attending school/center daily and arriving on time.
- 2 I will contact my child's teacher, school/center front office and/or Family Support Worker the day before and up to one hour after the start of the school/center day if my child will not be in attendance. If I do not contact Head Start staff within 1 hour of program start time, staff is required to contact me.
- 3 My Family Support Worker supports me and my family. When my child is absent after 2 consecutive days, they will visit with me and offer support, help identify and remove barriers for regular attendance, and provide referrals if necessary.
- 4 If my child is absent too many times, I may be placed on an attendance improvement plan.
- 5 If my child's chronic absenteeism continues, the program will work with me to identify and help remove barriers for regular attendance. If my child's attendance does not resume, my child may be placed back on the waitlist.
- 6 If my child will be away from school/center for an extended period, I will discuss this with my Family Support Worker or child's teacher before the extended period begins.
- 7 I will contact my Family Support Worker, teacher, or school/center front office if my child is sick, has symptoms, has been exposed to, has been quarantined, or diagnosed with an illness/disease and inform staff when my child is expected to return to class.

Child(ren) Name(s): \_\_\_\_\_



***I will attend school everyday to help grow my brain.***



## Goal Setting

When parents/guardians think about what they would like to achieve for their child and family in one year, two years, or even five years, they are thinking about family goals. Staff can help families set goals and work towards making those goals a reality. The City of San Antonio Head Start Program works in partnership with each family to identify strengths and challenges, set goals for the future, and make plans to meet those goals. Goals may include reading with children every day, finding better housing, learning computer skills, creating a household spending plan, or cooking more nutritious meals at home. Head Start staff will support families to create a plan to meet their goals and will check in with families throughout the year to support progress towards achievement



**A goal I would like to work on for my family:**

---

---

---



**A goal I would like to work on for myself:**

---

---

---



**Family Support Worker**

Name: 

---

Phone: 

---

Email: 

---



**Family Support Worker Supervisor**

Name: 

---

Email: 

---

Phone: 

---

## Getting to Know You



**What are three things you would like me to know about you and your family:**

---

---

---

---

---



**What interests and goals do you have for yourself or your family for this school year:**

---

---

---

---

---



### ***Did You Know?***

You don't have to wait for the first day of school to receive assistance. Your Family Support Worker can answer any questions or concerns you may have. We want to help make your child's school year a success!



## Support and Community Referrals

Raising young children can be challenging. The City of San Antonio Head Start Program wants to help families grow and find the support and resources they need. Staff members build caring and respectful partnerships, so every child has the best chance for success in school and life.

The following are examples of referrals that Head Start staff can provide:

- Housing assistance
- Homelessness prevention, intervention
- Utility assistance
- Alcohol or substance abuse services
- Domestic violence services
- Food and clothing assistance
- Parenting assistance
- Family Wellness support
- Internal Referrals to the Family Wellness Team
- Resources for grandparents raising grandchildren

**We all have a responsibility to  
protect all children**

If you suspect child abuse or neglect, you can call  
**1-800-252-5400** or report online at  
**[www.txabusehotline.org](http://www.txabusehotline.org)**

## Reporting Suspected Child Abuse and Neglect

All Head Start staff, contractors, and volunteers are required by law to report to the Texas Department of Family and Protective Services (TDFPS) if they suspect a child has been the victim of abuse or neglect. This report must be made whether the suspected abuse or neglect happened at or away from the school/ center. Staff will follow state regulations regarding timeframes, information to be reported, and the confidentiality of reported information. If a report is made, the child and family will continue in receiving Head Start services. A report to TDFPS or a family's involvement with TDFPS or law enforcement will never affect the participation of any child in the program.

## Wellness Support Services

The City of San Antonio Head Start Program employs qualified mental health professionals who provide consultations and wellness support services. Mental health professionals will collaborate with parents/ guardians to provide support in the home or the classroom. Collaboration may also include teachers and other Head Start staff to develop strategies to ensure the needs of each family is met. Staff may refer families to community providers to meet the social, emotional, and/or behavioral needs of children and their family.

For questions or concerns about social and emotional development and/or mental health, contact your child's teacher or your Family Support Worker. Staff will set up individual meetings to discuss wellness support options for your family.



### Early Head Start Mental Health Program Manager

Name: Christina Fitzgerald, LPC

Phone: 210-206-1021

Email: [Christina.Fitzgerald@sanantonio.gov](mailto:Christina.Fitzgerald@sanantonio.gov)



### Head Start Mental Health Coordinator

Name: Jessica Manyseng, LMSW

Phone: 210-206-1011

Email: [Jessica.Manyseng@sanantonio.gov](mailto:Jessica.Manyseng@sanantonio.gov)



## Program Management

The City of San Antonio Head Start Program has a strong governance structure. Parents/ guardians are encouraged to participate in our policy making decisions. Governance includes the City of San Antonio City Council, Bexar County Community Action Advisory Board, and the Head Start Policy Council. The Head Start Policy Council members are current Head Start and EHS parents/ guardians from all program options. In addition, all parents/ guardians of currently enrolled children are eligible to participate in the Parent Connection Committee meetings or to become a Parent Leader for their site. These committees and Parent Leaders play an important role in ensuring program decisions are made with parent/guardian input. Talk to your Family Support Worker to learn more about participating in this process. Every parent/guardian's voice is important!

## Policy Council

The Head Start Policy Council is a governing body that includes Head Start and EHS program parents/ guardians and community members. The Policy Council is responsible for program decisions, including recruitment and selection policies, program funding, and budgets. Representatives are elected by Head Start and EHS parents/guardians. It is the responsibility of Policy Council members to remain informed of issues facing the Head Start Program and share the information with other Head Start parents.

Policy Council members attend monthly meetings, participate in available trainings, and advocate for the best interest of the entire program. All meetings are open to the public and welcome parents to attend.



### City of San Antonio Policy Council Contact

Name: [Rocio Plata](#)

Phone: [210-206-5500](tel:210-206-5500)

Email: [Rocio.Plata@sanantonio.gov](mailto:Rocio.Plata@sanantonio.gov)

## Parent Connection Committee and Parent Leaders

Parents/guardians have a role in the operation of the Head Start program. Parent Connection Committee Meetings are held throughout the school year at each school/center. During these meetings, parents are encouraged to advocate and make recommendations for program improvements. Head Start Prek and EHS program staff, including principals/center directors, teachers and Family Support Workers attend the meetings and inform parents of school/center activities.

Parents are also updated on Policy Council activities and Head Start requirements and regulations. Guest speakers and other activities may also be planned during these meetings. Parent Connection Committee meetings are a great place to network and have fun. In addition, parents/guardians are encouraged to participate in officer roles but may choose to become a Parent Leader for their site. Parent Leaders will have the opportunity to build leadership skills, participate in free workshops, trainings, and community events. All Head Start parents/guardians are invited and encouraged to attend.



### When does my school/center hold their Parent Connection Meetings:

Dates: \_\_\_\_\_

Time: \_\_\_\_\_



## Community Complaint Procedure

Parents/guardians and community residents are encouraged to resolve complaints, problems, or concerns at the center/school level by talking to a teacher, Family Support Worker, center director, or principal. Concerns/complaints may also be submitted using the contact us section of the Head Start website at [www.saheadstart.org](http://www.saheadstart.org).

If attempts to resolve the concern/problem with the above staff person are not successful, the following formal steps may be taken:

**1.** If your child is enrolled in the Head Start Pre-K Program, call, email, meet with, or provide a written statement to the Early Childhood Education Director for your school district. If your child attends the Early Head Start Program, contact the Childcare Director or Site Coordinator. The Childcare Director will provide the parent/guardian or community resident a recommendation for resolution of the concern/problem within five business days of receipt of the issue. The Director may request additional time to resolve the concern/problem. If not resolved, you may proceed to step 2.

### Early Childcare Education Director/Child Care Director/ or Site Coordinator

Name: \_\_\_\_\_

Phone: \_\_\_\_\_

Email: \_\_\_\_\_

**2.** Call, email, meet with, or provide a written statement to the City of San Antonio Head Start Program Administrator. The Head Start Administrator will have five business days to resolve the concern/ problem. The Head Start Administrator may request additional time to resolve the concern/problem. If not resolved, you may proceed to step 3.

### Head Start Administrator

Name: Audrey Jackson

Phone: 210-206-5500

Email: [Audrey.Jackson@sanantonio.gov](mailto:Audrey.Jackson@sanantonio.gov)

**3.** Call, email, or provide a written statement to the Department of Human Services (DHS) Head Start Policy Council. The statement shall describe in detail the complaint, problem, or concern and steps taken to resolve the issue. The DHS Head Start Policy Council will provide a written response within 15 business days of receipt of the written statement. The DHS Head Start Policy Council may request additional time to resolve the concern/problem. If not resolved, you may proceed to step 4.

### Head Start Policy Council Liaison

Name: Rocio Plata

Phone: 210-206-5500

Email: [Rocio.Plata@sanantonio.gov](mailto:Rocio.Plata@sanantonio.gov)

**4.** Submit a signed, written statement to the City of San Antonio City Council's Governing Board/ Advisory Committee. The statement shall describe in detail the complaint, problem, or concern and steps taken to resolve the issue. The City of San Antonio City Council's Governing Board/ Advisory Committee will provide a written response within 15 business days of receipt of the written statement. The City of San Antonio City Council's Governing Board is the last formal step in resolving parent/community resident complaints or concern and the resolution is final.



## Opportunities for Parent Engagement

Parent engagement is an interactive process where staff, families, and children build positive and goal-oriented relationships. Our approach to engagement is through partnership. We strive to work as equal partners to ensure all children in our program are ready for success in kindergarten and beyond. This requires mutual respect for the roles and identifying strengths each has to offer. We do this through establishing a trusting, relationship-based partnership from the beginning by learning about you and your family. Head Start supports opportunities across the following family outcomes:

- Family Well-being
- Positive Parent-Child Relationships
- Families as Lifelong Educators
- Families as Learners
- Family Engagement in Transitions
- Family Connections to Peers and Community
- Families as Advocates and Leader

Parent engagement opportunities are offered throughout the year at various times and locations. You will be notified ahead of time to participate. Parent/guardians are also encouraged to volunteer, volunteering in Head Start provides parents/guardians the opportunity to build new skills that encourage the development of nurturing relationships with both their children and teachers. Research shows that parent participation in their child's learning positively impacts children socially, emotionally, and academically.

## Parent Training

The Head Start program offers a series of trainings and learning opportunities for parents/guardians. Workshops, trainings, and seminars are offered throughout the year at various locations and are based on the interests and needs of parents.

### Triple P – Positive Parenting Program

Triple P – Positive Parenting Program In collaboration with San Antonio Metro Health, the City of San Antonio Head Start Prek and Early Head Start Program offer various levels of the international, evidence-based positive parenting program, Triple P, to all families enrolled in the program. Triple P has five levels of family education and intervention for parents with children up to 12 years of age.

Triple P Level 2 Selected comprises of three seminars that provide a light touch to Triple P for parents or caregivers, with children up to 12 years, that are interested in general information about promoting their child's development. The series of seminars can also assist parents with specific concerns about their child's behavior or development.

Primary Care Level 3 Primary is individually tailored with a focus for specific child behavior concerns or family stressors and includes an active skills training process to help parents acquire new knowledge and skills, evaluate their performance, and set themselves goals for change. Triple P Level 3 Discussion Group includes parent discussion groups on common parenting concerns focusing on a brief parent education for specific topics and includes active skills training.

Triple P Level 4 is an 8-week closed group focusing on child management skills including monitoring problem behavior and the attention given following desirable behavior.

Triple P Level 5 is for families who need added support after the participation in a lower level of the program. It focuses on marital communication, partner support, mood management and stress coping skills for parents.

For more information on how to participate in the Triple P program families can reach out to their Family Support Worker or Family Wellness Specialist.

## EHS Playgroups

Parents/guardians participating in the EHS Home-based Program option may also participate in playgroups held twice a month for a total of 22 during the program year. Playgroups are an opportunity for parents/guardians enrolled in the home-based program to socialize and network with other parents, home visitors, other EHS staff and community members. This is an opportunity to discuss your child's development, promote school readiness activities and strengthen the parent-child relationship. All playgroups are planned jointly with the parents and must include participation of both the parent/guardian and the child.

# Education Information

## School Readiness

School Readiness means that children are ready for school, families are ready to support their children's learning, and schools are ready for children. Head Start views school readiness as children possessing the skills, knowledge, and attitudes necessary for success in school and for later learning and life. Physical, cognitive, social, and emotional development are all essential parts of school readiness.

Head Start values the unique role families play in this process. Our program will provide opportunities for you to help prepare your child for kindergarten. Talk to your child's teacher and Family Support Worker to learn more about events, activities, and resources that can help you make connections with other parents, continue building a positive relationship with your child, learn about child development, and improve family well-being. School Readiness information is presented throughout the year during orientation, Policy Council meetings, Parent Connection Committee meetings, trainings and conferences, and in reference materials.

Our school readiness goals focus on the knowledge, skills, and abilities children should attain as a result of Head Start and EHS services. Our program identifies key school readiness goals within the five central domains of the Head Start Early Learning Outcomes Framework (HSELOF): Approaches to Learning, Social & Emotional Development, Language & Literacy, Cognition, and Perceptual, Motor, and Physical Development. The school readiness goals are linked to the Parent, Family & Community Engagement Framework (PFCE).



## Approaches to Learning

Children will recognize and manage their feelings, emotions, and behaviors.

Children will demonstrate interest, curiosity, focus, and persistence while exploring and investigating the world around them.

## Social & Emotional Development

Children will develop emotional awareness, self-regulation, and conflict resolution skills.

Children will build positive relationships with peers and adults, engage in cooperative play and positive interactions, and show care and concern for others.

Children will develop a sense of connection and inclusion within their school, family, and community.

## Language & Literacy

Children will demonstrate an understanding of spoken language and how sounds, letters, and words relate to one another.

Children will communicate with others and initiate learning through language.

Children will demonstrate an understanding of how print, gestures, signs, drawings, and pictures are used.

Children will demonstrate an understanding of books and stories and the ways they are organized and presented.

## Cognition

Children will show curiosity, engage in hands-on investigations and experiments, ask questions, and make predictions to understand and organize their world.

Children will demonstrate reasoning, memory, and problem-solving skills.

## Perceptual, Motor, & Physical Development

Children will use their senses to understand, organize, and explore their world.

Children will demonstrate increased independence in motor skills, self-care, and safety.

## Home Visits and Parent Conferences

Your child's teacher will schedule at least two home visits and two parent conferences during the school year with you. The purpose of each home visit and parent conference is to learn about your child and family, discuss your child's development and progress, and share goals for your child. This is a chance for you to share your child's interests, strengths, and experiences. You are welcome to ask questions about your child or the Head Start program. Parents may schedule an appointment with the principal/director or teacher at any time to address any questions or concerns.

## EHS Home-Based Home Visits

Families with children enrolled in the EHS Home-Based option will receive weekly home visits for 90 minutes with a minimum of 46 visits per program year. Home Visitors will support parents in their role as their child's first and most important teacher by providing individualized activities that promote secure parent-child relationships.

## Discipline and Guidance

Head Start promotes positive discipline and guidance that encourages building self-esteem and self-control. These methods include:

- Using praise and encouragement of developmentally appropriate behavior
- Frequent reminders of behaviors expectations using clear and positive statements
- Redirecting behavior using positive statements

The City of San Antonio Head Start Program does not use harsh, cruel, or unusual treatment with children. The following are examples of discipline methods that are **not allowed**:

- Corporal punishment or threats of corporal punishment
- Punishment associated with food, naps, or toilet training
- Pinching, shaking, or biting a child
- Hitting a child with a hand or object
- Putting anything in or on a child's mouth
- Humiliating, ridiculing, rejecting, or yelling at a child
- Pointing a finger in a child's face
- Snapping fingers at a child
- Use of isolation to discipline a child
- Binding or tying a student to restrict movement
- Threatening phrases or sarcastic language
- Threatening to call a child's parent/guardian related to behavior
- Subjecting a child to harsh, abusive, or profane language
- Placing a child in a locked or dark room, bathroom or closet with the door closed
- Requiring a child to remain silent or inactive for inappropriately long periods of time for the child's age
- Child restraint performed by staff not certified in proper restraint procedures
- Withholding outdoor free play
- Requiring a parent/guardian to pick up a child due to misbehavior





## Curriculum

The City of San Antonio Head Start Program uses research-based, state-adopted early childhood curricula to guide and plan instruction. Various curricula are used within the program. Preparing children for school is a primary focus in all our classrooms. Each curriculum aligns with the Head Start Early Learning Outcomes Framework and the Texas Pre-kindergarten Guidelines or Little Texans Big Futures. Ask your child's teacher about the curriculum used in the classroom.

## Screenings and Assessments

All children receive a developmental and social/emotional screening within 45 days of entry into the program. Parents/Guardians will be asked to complete the screening tools. The following areas are screened: gross and fine motor skills, cognitive, language, self-help, and social and emotional development. If further evaluation is needed, parents/guardians are notified and involved in the process to help their child achieve specific goals.

A vision and hearing screening may also be provided within 45 days of a child's entry into the program.

In addition to initial screenings, ongoing formal and informal assessments are conducted throughout the program year. Information from assessments, parent input, classroom observations, and work samples is gathered and used to plan activities to support learning.

## Ready Rosie

Do you want to help your child build language, math, and social/emotional skills? Join Ready Rosie!

The City of San Antonio Head Start Program provides the Ready Rosie Program, a research-based parenting curriculum, to all families FREE of charge.

Ready Rosie helps build language, reading and math skills. Parents/guardians will receive access to short videos (2-3 minutes) in English and in Spanish that model fun and easy activities to do with children at home and in places like the grocery store, bus, car, or restaurants.

Ready Rosie is available through text, email, and smart phone applications. Parents/ Guardians will receive an invitation to join Ready Rosie at the beginning of the school year. This invitation must be accepted to receive the videos.

Family Support Worker can assist parents/guardians who do not have an email address to sign up for a free email account. If you need help or do not have access to Ready Rosie, contact your Family Support Workers or child's teacher

## Toilet Training

A child will not be denied enrollment into Head Start if they are not potty trained. Head Start classroom staff will work together with parents/guardians to teach toileting skills to children. Toileting skills will be based on individual needs and family customs and beliefs.

Our schools and centers have limited laundry facilities, so soiled clothing will be sent home. Please talk with your child's teacher and Family Support Worker to share any questions or concerns related to potty training.



### My Child's Teacher Information

Name: \_\_\_\_\_

Phone: \_\_\_\_\_

Email: \_\_\_\_\_

Conference  
Hours: \_\_\_\_\_

- ✓ I have notified my child's teacher/ Family Support Worker of my child's toilet training needs.
- ✓ I have provided a clean change of clothes for my child in the event my child needs to be changed at school.
- ✓ I am working with my child's teacher on ways I can practice a toilet training routine with my child at home.
- ✓ I have reviewed my school district or childcare center policies and guidance concerning toilet training.



# Nutrition & Health Information

## Nutrition and Meal Service

In order to meet nutritional needs and special dietary accommodations, children receive a nutrition assessment at application and/or start of each new program year. Staff and families work together to identify nutritional needs for each child and parents/guardians receive information concerning diet and general nutrition. Special dietary needs, with documentation from the child's healthcare provider, are considered when providing meals to children. When appropriate, a registered dietitian or nutritionist will provide nutrition consultations. Please communicate with staff if your child has any food allergies or intolerances, cultural/personal preferences, or any nutrition related health concerns and feeding requirements throughout the year.

Head Start and EHS follow USDA standards. Foods served are high in nutrients and low in fat, sugar, and salt. Children are provided a nourishing breakfast, lunch, and snack. Children in the home-based program are provided a meal or snack depending on the time of their playgroup. Center staff and children eat together and use mealtime to engage in conversation and social interaction. Regardless of the time of arrival, children are offered breakfast. Food is never used as punishment or reward. Children are encouraged, but not forced, to eat or taste their food during meals and snack time.

For the health and safety of all children, adults, and volunteers, many of our school/center only allow meals and snacks prepared at school during the school day, including field trips.

If you have any questions about snacks and meals, including birthday and holiday celebrations, please talk with your child's teacher, Family Support Worker, the site director/principal, or nutrition coordinator.



Need a copy of a Special Diet/Medication form? Contact your Family Support Worker or School Nurse



I submitted the Special Diet/ Medication Form to my Family Support Worker or Nurse



### My School Nurse Information

Name: \_\_\_\_\_

Phone: \_\_\_\_\_

Email: \_\_\_\_\_

## Health and Safety

Healthy habits are established in the classroom to help reduce the spread of germs and illnesses. Hand washing and tooth brushing are practiced in the classroom daily. Classrooms and outdoor spaces are inspected and cleaned daily. Playgrounds are age appropriate, and the equipment is safe. Children are also taught the importance of pedestrian and bus safety. In addition, provisions and/or adjustments are made for children with disabilities to ensure their safety, comfort, and participation in all aspects of the Head Start Program.

The City of San Antonio is not responsible to pay medical bills, including ambulance fees, related to an injury sustained by a child, or their parent/guardian, enrolled in the City of San Antonio Department of Human Services Head Start Program. The City of San Antonio is a political subdivision of the State of Texas and subject to the Texas Tort Claims Act (Tex. Civ. Prac. & Rem. Code, Section 101.001, et. seq.), with limited liability.

## Dental Screenings

Regular oral healthcare prevents tooth decay and disease and improves chewing, nutrition, language skills, and overall health. Children with healthy teeth are better able to eat, speak, and focus on learning. Head Start requires all children, six months and older, to have an established dental home where they receive routine preventive oral health care and if needed, restorative treatment.

In addition to visiting your child's dental home for routine oral health care, our program partners with Metro Health to provide a free on-site dental screening and fluoride varnish. With a signed consent dental screenings are performed, by a licensed dentist and occur in the fall and spring during the program year. If you prefer that Metro Health not provide dental services for your child, please inform your Family Support Worker. You will be given a Private Dental Exam form to take to your child's dental provider, if needed.



Need a copy of a Private Dental Exam form? Contact your Family Support Worker.

## Health Services

Health and school readiness begin long before a child enters the classroom. As your child gets older and grows, their needs change. Access to ongoing medical and dental care can help ensure your child is healthy and ready to learn. A current physical or well-child exam can help identify health concerns that may affect your child's learning. Children who are healthy are more prepared for school.

Our program may identify health and/or dietary concerns when you complete an application for enrollment. Any concerns will receive an appropriate referral and follow-up. If needed, staff will work with you and your medical provider to develop a health care plan.

Your Family Support Worker will work with you to complete/obtain the following:

- Current physical or well-child exam
- Copy of current immunization record
- Proof of current health insurance
- Medical and Dental Home information
- Care plan and medication instructions from a doctor for health concerns, such as asthma, diabetes, allergies, etc. These forms must be updated each year
- Special diet documentation (if applicable)
- Allergy information and Plan of Action (if applicable)
- Lead screening results (usually done at 12 and 24 months of age). If your child's doctor does not have a screening result on file, then a blood lead screening should be completed as soon as possible. If your child is missing a lead screening, the program, with your consent, may provide the screening free of charge.
- Hemoglobin screening results. Hemoglobin screenings are required for children in Early Head Start who are 12 months of age and older. If your child is missing a hemoglobin screening, the program, with your consent, may provide the screening free of charge.
- Dental exam and, if needed, dental referral of follow-up treatment (cleaning, filling, crowns, sealants, etc.)
- Hearing and Vision screenings
- Developmental and Social-emotional screenings (Ages & Stages Questionnaires: ASQ- 3 and ASQ-SE)
- Tuberculosis (TB) Questionnaire

## Additional Tips and Information

- Be sure to update all contact information as it changes. It is important that all emergency contact telephone numbers are working.
- Make sure your child is present for screenings and exams scheduled on site.
- Inform staff when your child's health status changes.
- Inform staff if your family is experiencing health-related issues or concerns.
- Early intervention or special education services are available for children. Diagnosis and/or referral documents must be on file. Contact your Family Support Worker, child's teacher, or other Head Start staff for any questions or concerns regarding services for children with special needs.

### Forms must be updated every year the child is enrolled in the program



Need a copy of a Physical, Asthma Action Plan, Medication form etc? Contact your Family Support Worker.



I have submitted Required Medical forms to your Family Support Worker or School Nurse



### My Child's Medical Information

Medical Office: \_\_\_\_\_

Medical Provider: \_\_\_\_\_

Phone: \_\_\_\_\_

Address: \_\_\_\_\_

## Health & Safety Guidance & Information

The health and safety of our families, staff, and community is our top priority. The City of San Antonio Head Start Program will follow guidance provided by the Office of Head Start, Center for Disease Control and Prevention (CDC), the City of San Antonio Metro Health Department, Texas Education Agency (TEA), Texas Child Care Regulations, San Antonio ISD, and Edgewood ISD regarding program services in response to health and safety concerns. For additional information and updates regarding program services and availability, please contact your child's campus/center or Family Support Worker.

# Safety & Transportation Information

The Head Start program provides safety education information to all Head Start parents/guardians.

Please review the following information.

## Pedestrian Safety Information

- Children should always be escorted by an adult when crossing the street, in a parking lot, and when entering a Head Start facility.
- Children should hold hands with the adult and walk besides, not in front of or behind, the adult.
- When escorting children to school, position yourself between the traffic and the child.
- Teach children to look left-right-left when coming to the edge of the street to identify approaching vehicles.
- Always stop at the curb before crossing the street.
- Walk, don't run, across the street.
- Whenever possible, cross at corners with traffic signals and crosswalks.
- Walk facing traffic.
- Make sure that drivers see you by communicating with them verbally or through body language before crossing in front of them.
- Minimize loose clothing items, such as long drawstrings, that may become tangled or cause a child to trip.
- Wear reflectors or white clothing when walking during times of limited visibility, such as early in the morning or late in the afternoon or when rain or fog is in the forecast.
- Reinforce the meaning of the red, green, and yellow colors indicated on the traffic light.
- When picking-up or dropping-off your child, please park in the school/centers designated areas.
- Children should never be left unattended in vehicles.
- Always be alert and cautious when traveling near a school campus or childcare center. Avoid rushing.
- Look out for other motorists who may be rushed or distracted.

## Safe Riding Practices

- Children need to remain buckled in their seat until the driver says they can exit.
- Children need to remain seated while the bus is in motion.
- Only adults can open and close windows.
- Children should sit in the seat facing forward and keep all body parts away from the aisle and inside the vehicle.

## Child Safety

- Children should remain buckled in their seat belts, harnesses, or car seats appropriate to their age until the monitor or driver says they may unbuckle.
- Children should be seated in height-weight appropriate child restraint seats.
- Children who ignore safety instructions may be denied access to the bus.

## Railroad Crossing

- When approaching a railroad crossing, the driver should tell children that the bus is coming to a railroad crossing.
- The driver should instruct children to remain quiet until they are instructed, they can talk again.
- The driver must stop at all railroad crossings, never closer than 15 feet from the nearest rail.
- The driver should open the driver's window and passenger door and look and listen for an approaching train.
- The driver must close the passenger door before driving across the tracks.
- The driver should let children know when they may talk again, thank them for being quiet, and explain the importance of safety at railroad crossing.

## School Bus Safety

- Escort children to and from the bus stop. This is an important transition from the home to the program.
- Teach children to look left-right-left when coming to the edge of the street.
- Ensure loose clothing items such as long draw-strings do not get tangled.
- Stand back at least 10 feet from where the bus stops.
- The bus should stop to the right of traffic lane when loading and unloading, about two feet from the road's edge.
- Stand still until the bus driver opens the door.
- Remind children to hold onto the handrail and walk one step at a time.
- The bus monitor or other adult needs to accompany preschool children while crossing the street.
- Reinforce the meaning of the red, green, and yellow colors indicated on the traffic light.
- Talk to children about the danger zones around the bus. Use the diagram to the right:

- **Front of the bus (extreme danger)**
- **Back of the bus (extreme danger)**
- **Standing, waiting, and leaving or entering the bus (walking area)**

## Transportation Services

Transportation may be available upon request for Head Start Prekindergarten children. Parents/guardians in need of transportation must meet the school district's policy and eligibility requirements. Currently, our EHS Program does not provide transportation services.

However, if you need transportation, please contact your Family Support Worker, teacher, or other Head Start staff so that they may provide you with additional information or outside resources. Car seat support and resources are also available, please contact your Family Support Worker.



### School District Transportation Contact

Name: \_\_\_\_\_

Phone: \_\_\_\_\_

Email: \_\_\_\_\_

# Head Start Family Partnership Agreement

## As a Head Start Parent, I will:

## As a Head Start Staff member, I will:

Make sure that my child attends school every day and on time.

Promote a welcoming and culturally sensitive environment that is respectful of your child and family.

Provide my child with a medical and dental home. If my child does not have a medical and/or dental home, I will work with the Head Start staff to find one.

Assist and provide resources to help your family establish a medical and dental home.

Make sure that my child's immunizations and well childcare visits are up to date.

Follow-up with you to ensure that your child receives appropriate health screenings. Work with you to ensure that your child's immunizations and well-child visits are up to date.

Follow-up on any medical, dental, or other health concerns regarding my child.

Follow-up on medical, dental, or other health concerns regarding your child.

Follow the health and well-child information guidelines listed on page 16 and 17 of this Parent Handbook.

Provide you with information and training opportunities related to healthy habits, screenings, and other health-related topics.

Attend two parent conferences and two home visits and work with my child's teacher to develop and support my child's educational goals.

Collaborate with program staff to provide you with information about your child's education.

Work in partnership with my Family Support Worker to complete a family assessment and set goals for myself and my family

Coordinate training and resources for you and your family to achieve goals set.

Participate in leadership opportunities and Parent Connection Committee meetings.

Help you achieve your goals by providing referrals and support when you need social services and community resources.

Volunteer and attend events at my child's school/center.

Assist in organizing the Parent Connection Committee meetings and other activities.

Participate in Ready Rosie activities and other parent engagement activities and trainings.

Promote our parenting curriculum and ensure your family has access to Ready Rosie videos and workshops, as well as other parent engagement activities and trainings.

For families participating in the EHS Home-Based option only: Be present and participate in weekly scheduled home visits, participate in parent programs and bi-monthly educational play group activities.

Inform you regularly about volunteer opportunities and other events in the classroom and at school.



**Head Start Family Partnership Agreement**  
**City of San Antonio Head Start Community Complaint Procedure**  
**Procedure Pedestrian & Bus Safety Training**

Family Name: \_\_\_\_\_

ChildPlus Family ID: \_\_\_\_\_

By enrolling your child(ren) in our program, you are joining us in focusing on positive child and family outcomes to build a better future for the children, families and communities served by the City of San Antonio Head Start and EHS Program.

To reach this goal, we will work together as equal partners. Please join us by committing to all aspects of this Parent Handbook and Head Start Family Partnership Agreement.

**I acknowledge the following:**

- I have received a copy of the Parent Handbook. The program requirements were explained to me.
- I have read the Attendance Agreement for center-based services and understand the importance of my child's daily attendance. I will make attendance a priority and work with my Family Support Worker, school/center, and my child's teacher if I need assistance. I understand that regular attendance will help my child have a successful year.
- I have reviewed the Head Start Community Complaint Procedure outlined in the Parent Handbook.
- I have read and understand the safety and transportation information outlined in the Parent Handbook. I agree to share this important safety information with my child and follow all pedestrian and bus safety training and procedures.
- I have read the Head Start Family Partnership Agreement, and I agree to follow through on my responsibilities as a Head Start parent/guardian.



# Community Resources

## **Alamo Area Council of Governments (AACOG)**

(210) 362-5200

- Weatherization program
- Intellectual and developmental disability services
- Senior Services

## **Any Baby Can**

(210) 227-0170

- Family support groups
- Prescription assistance

## **Bexar County, Department of Community Resources**

(210) 335-3666

- Utility assistance
- Veterans services
- Community health

## **Bexar County Family Justice Ctr.**

(210) 631-0100

- Domestic violence support
- Legal assistance

## **Café College**

(210) 207-4528

- Free assistance with college admission
- Financial aid support
- Scholarship/ Career Guidance

## **Catholic Charities**

(210) 222-1294

- Utility assistance/ Rental Assistance  
Monday-Friday only Caritas Legal
- (210) 433-3256 ext. 3
  - o Immigration and refugee services

## **Center for Health Care Services**

(800) 316-9241 or (210) 223-7233

- Children and Adult mental health conditions
- Substance use challenges
- Intellectual or developmental disabilities

## **City of San Antonio Baby Café**

(210) 207-7138

- Support for breastfeeding mothers and pregnant women

## **City of San Antonio Child Care Services**

(210) 230-6300

- Subsidized child care

## **City of San Antonio Financial Assistance Division**

(210) 207-8198

- Utility assistance
- Plumbers to People Program

## **City of San Antonio Financial Empowerment Center**

(210) 206-5372

- Financial counseling and resources

## **City of San Antonio Green and Healthy Homes**

(210) 207-4444

- Lead inspection/risk assessment of home
- Lead hazard control work to home
- Remediation of asthma triggers in the home

## **City of San Antonio Head Start Program**

(210) 206-5500

- Car Seat Inspections

## **City of San Antonio Neighborhood & Housing Services**

(210) 207-6459

- Home buying and housing rights education
- Resolution of housing related discrimination
- Home foreclosure intervention and counseling

## **City of San Antonio Ready to Work Program**

(210) 207-5627 or 311

- Job training program

## **City of San Antonio Training for Job Success**

(210) 207-5929

- Education assistance

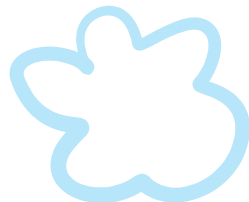
## **Family Violence Prevention Services, Inc. (Women's/Children's Shelter)**

(210) 733-8810

- Crisis hotline

(210) 930-3669

- Counseling, legal, and transitional housing assistance



# Community Resources

## Goodwill Industries

(210) 924-8581

- Job training
- Education assistance

## Haven for Hope

(210) 220-2100

- Shelter assistance
- Case management services

## Housing Authority of Bexar County

(210) 225-0071

- Section 8 Housing Voucher Program
- Public Housing

## NXT Level Youth Opportunity Center

(210) 207-1723

- Youth educational & career goals

## Planned Parenthood

(210) 736-2262 - 2140 Babcock

(210) 736-2475 - 920 San Pedro

(210) 590-0202 - 11514 Perrin Beitel Rd

(210) 674-2222 - 235 Richland Hills Dr

(210) 333-5454 - 7022 SN Braunfels AVE Ste 103

- Health care services

## Pride Center

((211 / 311) or (210) 370-7743

- LGBTQ+ Community Resources

## Project Quest

(210) 630-4690

- Educational opportunities

## Rape Crisis Center

(210) 349-7273

- Counseling services for victims of sexual assault

## Roy Maas Youth Alternatives

(210) 340-7971

- Child and family counseling
- Parenting education

## San Antonio Food Bank

(210) 337-3663

- Food pantry
- Food Stamps, TANF, CHIP, WIC
- Women's Health Care application

## San Antonio Metro Health

(210) 207-8750

- Immunizations

## Society of St. Vincent de Paul

(210) 212-5330

- Food and clothing assistance
- Rental & utility assistance
- Furniture and appliances

## St. Mary's University Civil Justice Center

(210) 431-2596

- Legal aid

## Texas Abuse Hotline

1-800-252-5400

- Abuse, neglect, and exploitation of children, adults with disabilities, or people who are elderly (65 years or older)

## Texas Attorney General

(210) 930-1091 —West Office

(210) 333-6011 —South Office

- Child support
- Family initiatives

## Texas Rio Grande Legal Aid

(956) 996-8752

- Legal Aid

## The Arc of San Antonio

(210) 490-4300

- Support services for people with developmental disabilities

## United Way of San Antonio Help Line

2-1-1

- Hotline for connection to community resources

## Workforce Solutions

(210) 272-3260

- Job training
- Career counseling
- Job development and placement assistance

## WIC

(210) 207-4906

- Food benefits
- Nutrition education
- Counseling
- Breastfeeding support

**If you're thinking about suicide, are worried about a friend or loved one, or would like emotional support, please contact:**

## Crisis & Suicide Lifeline

Call or Text 988

Online Chat also available at <https://988lifeline.org/>

Free and Confidential services available 24/7



1227 Brady Blvd  
San Antonio, TX 78207

210.206.5500  
SaHeadStart.org



@SanAntonioHeadStart



@HeadStartSA

